


**Belgotex™**

# Textured Collection.

Broadloom & Rug

**B**



**A treat for your  
eyes, a delight  
for your feet  
and a feast for  
your soul!**

**Our textured collection of 7  
alluring designs in 7 colours,  
transforms your floor into a  
multi-dimensional experience.**

## Versatile.

Designed with both commercial and residential needs in mind, the textured collection is made of Belgotex Solution Dyed Nylon to make it suitable for both General and Medium Commercial spaces. Boasting its stain-resistant characteristic, our Textured collection is appropriate for any environment as a broadloom or rug application.

## A Unique Tufting System.

Consisting of 7 trendy colours, from beige/grey tones to vibrant shades, each design and structure created by cut and loop gives a 3-dimension textured look.



Explore The Range.

# Chevron.

Many of the actions and thoughts that we fill the minutes of our lives with, are not essential. They cause unnecessary stress and anxiety. Before you act, think, question your motives. If tranquillity is what you seek, then let go of the non-essential.

Bronze



Charcoal

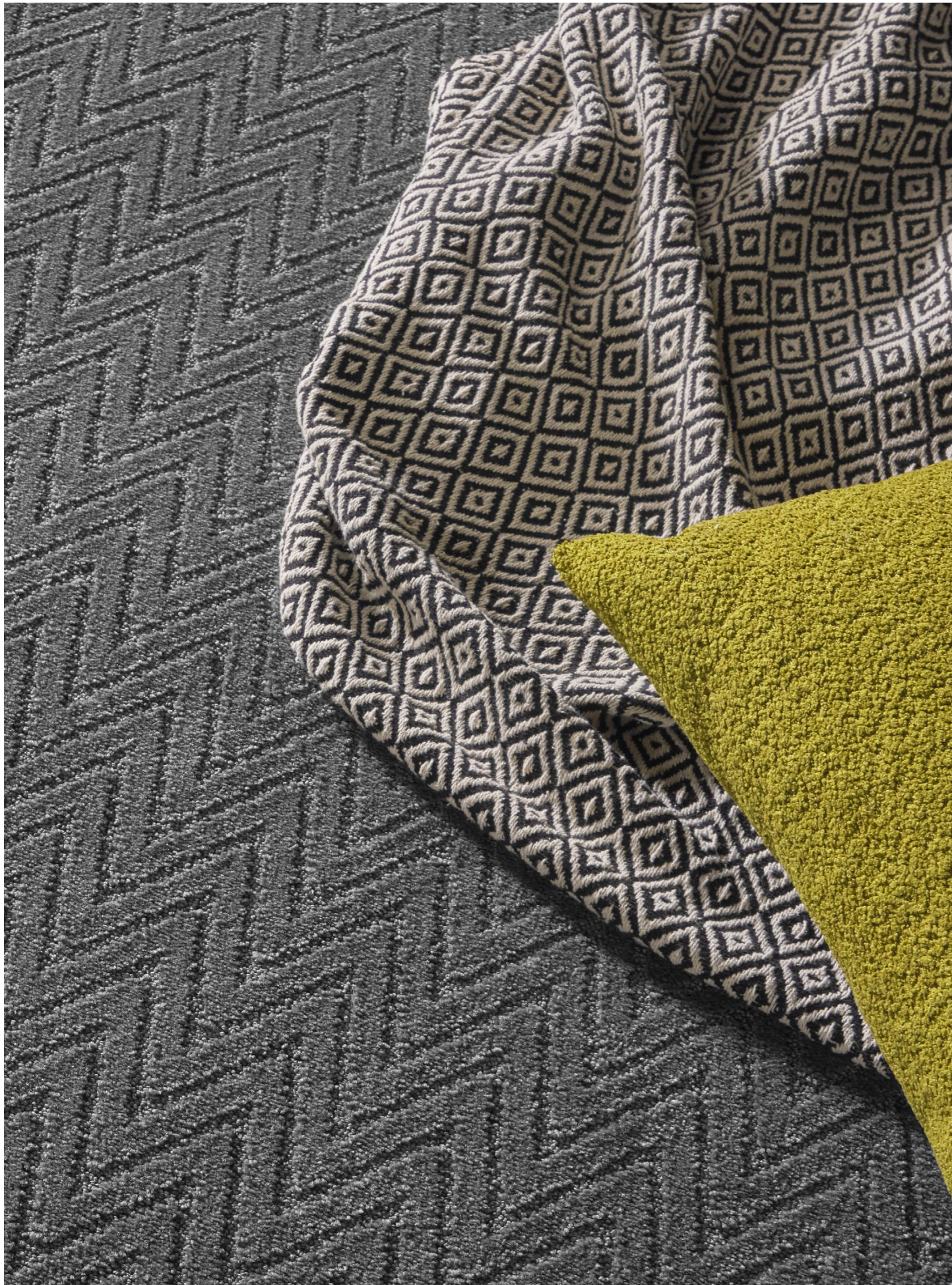


Dove



Earthy



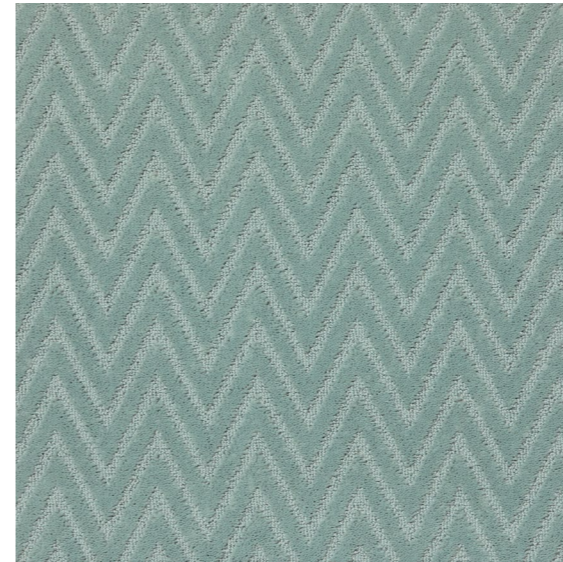


CLICK OR SCAN  
TO VIEW SPEC  
INFO

# Chevron.

Pattern Repeat (l x w): ± 4.5 × 8.5 cm

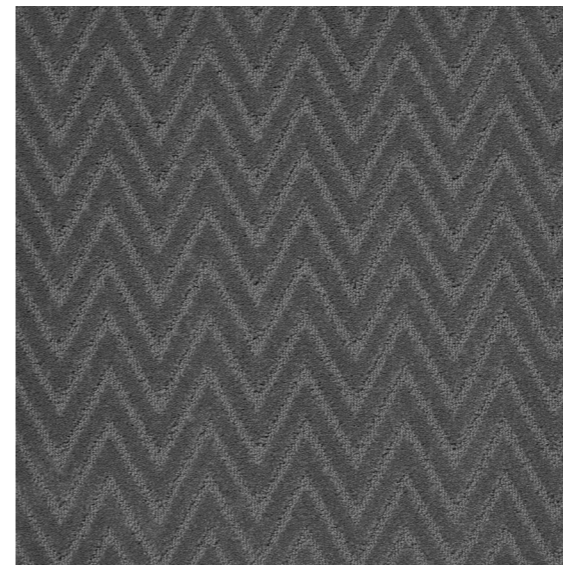
**Metal**



**Mustard**



**Silver**



Explore The Range.

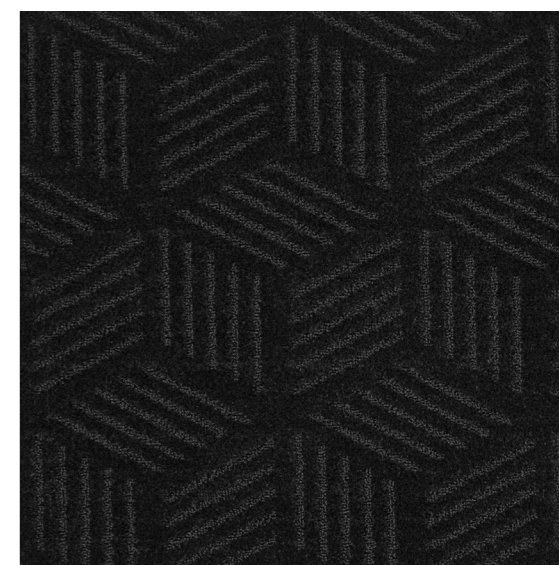
# Cubed.

As one of the five platonic solids, the cube symbolises the Earth. Its shape draws from the Earth's strength, order and dynamic balance. A home can be curated to be a source of strength and order, to ground you, and to bring balance to your surroundings.

**Bronze**



**Charcoal**



**Dove**



**Earthy**





CLICK OR SCAN  
TO VIEW SPEC  
INFO

# Cubed.

Pattern Repeat (lwx): ± 22.5 × 35 cm

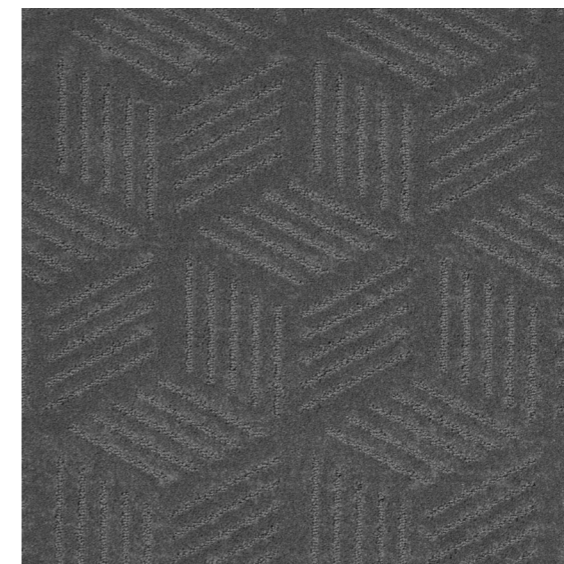
## Metal



## Mustard



## Silver



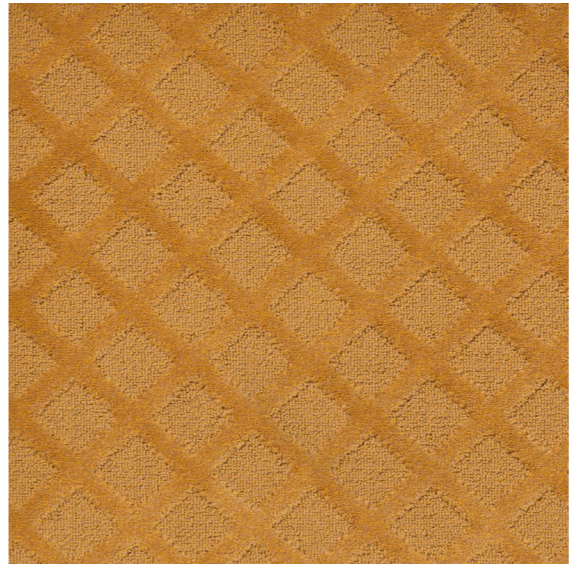
Explore The Range.



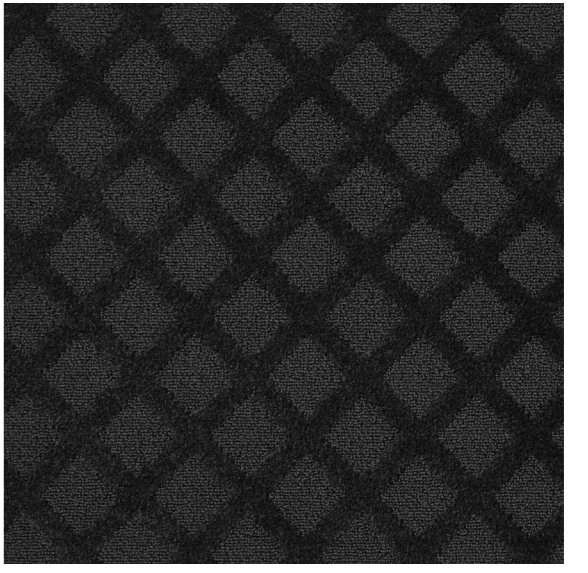
# Mesh.

A mesh is made up of overlapping strands connected in such a way that they set a barrier whilst at the same time allowing some things to pass through. Similarly, in life, focus only on the things that can be controlled and for the rest, let them pass.

Bronze



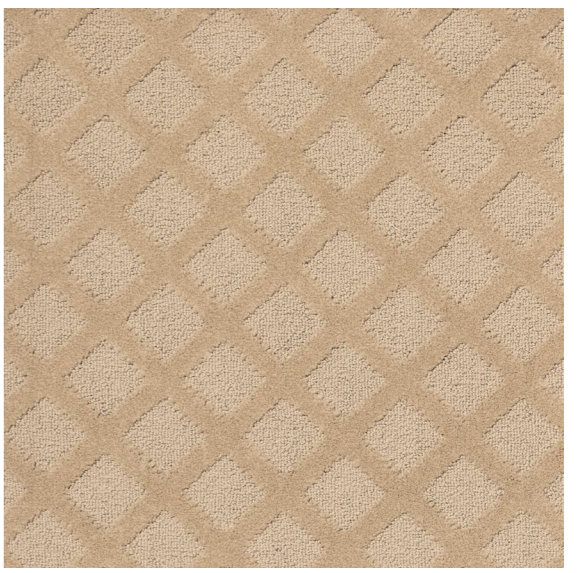
Charcoal



Dove



Earthy







CLICK OR SCAN  
TO VIEW SPEC  
INFO

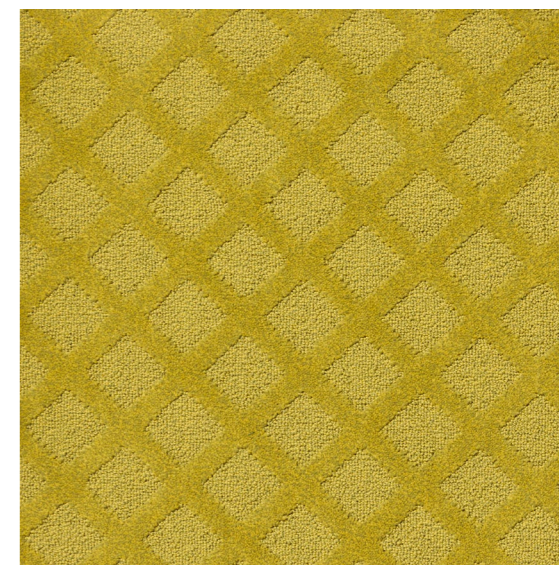
# Mesh.

Pattern Repeat (l x w): ± 9.5 × 10.5 cm

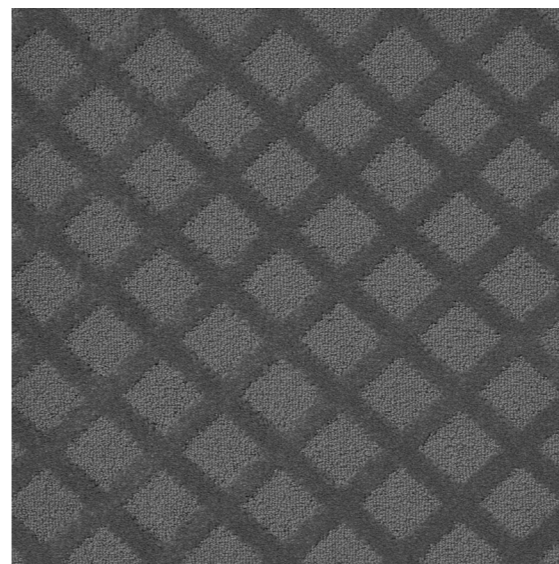
**Metal**



**Mustard**



**Silver**



Explore The Range.

# Relic.

An explorer stumbles upon a long-lost treasure. It reminds us that the value of things we cherish today, is a consequence of the past. The value is not in the thing itself, but in its capacity to open up our imaginations to rethink what is important and that we too are leaving relics for the future. What will those be?



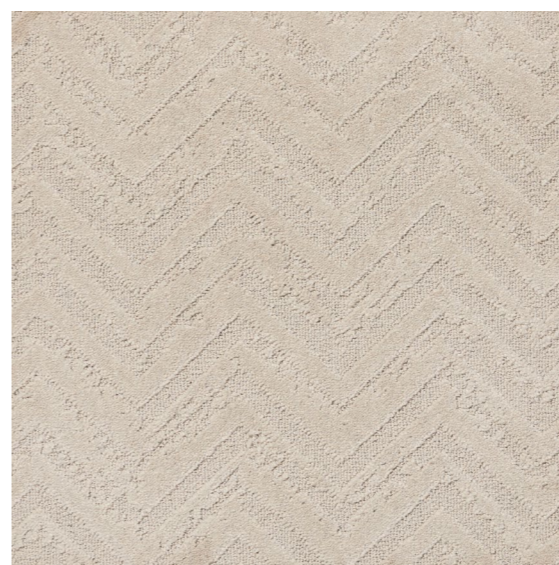
**Bronze**



**Charcoal**



**Dove**



**Earthy**



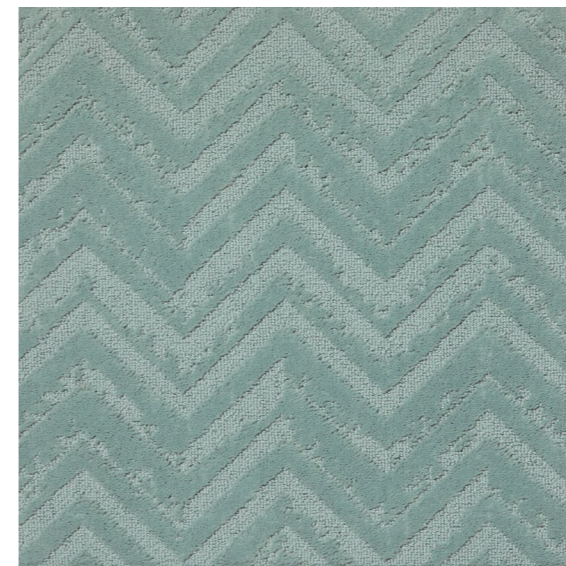


CLICK OR SCAN  
TO VIEW SPEC  
INFO

# Relic.

Pattern Repeat (l x w): ± 95 × 77 cm

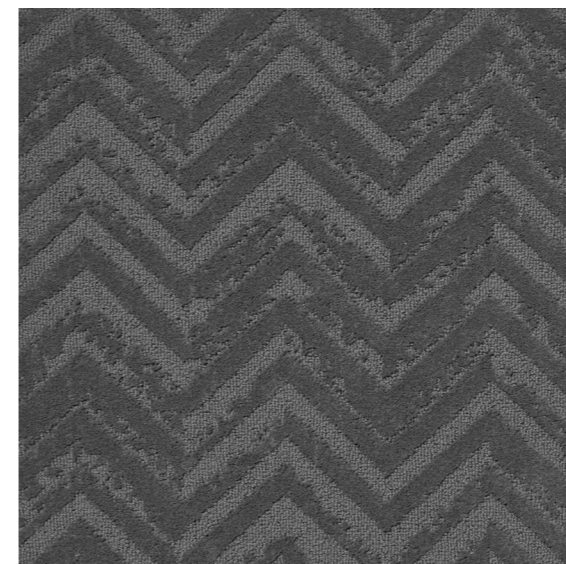
## Metal



## Mustard



## Silver

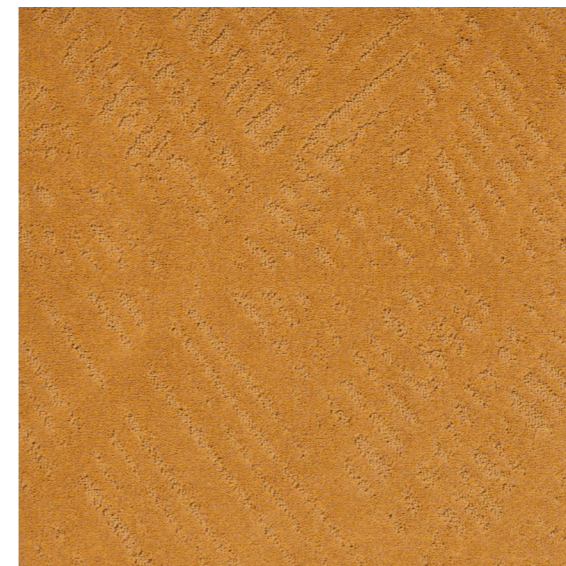


Explore The Range.

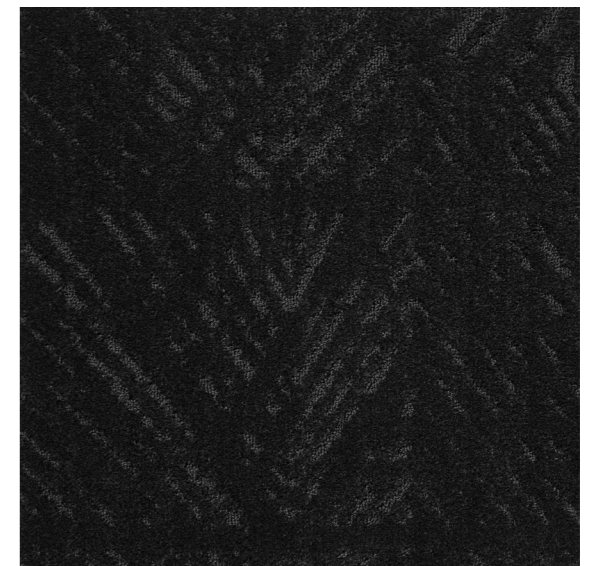
# Scales.

While you cannot predict what the future holds, you can take action within your means to tip the scales in your favour. Cultivate conditions in your life that make it easier to realise your goals. Then, to increase your chances of achieving them, turn them into habits!

**Bronze**



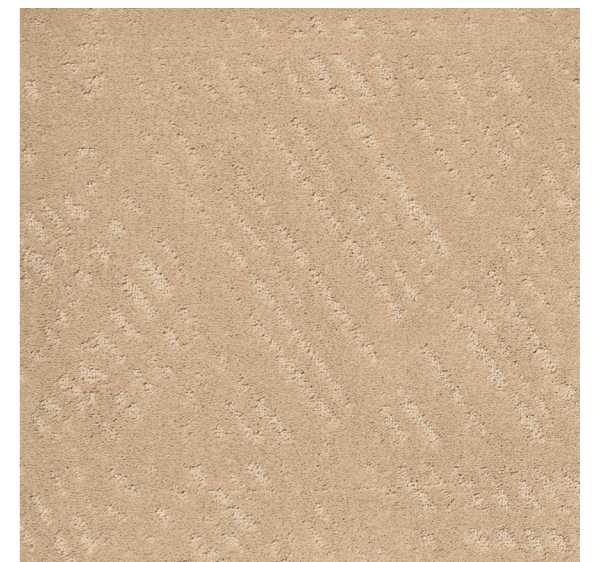
**Charcoal**



**Dove**



**Earthy**





CLICK OR SCAN  
TO VIEW SPEC  
INFO

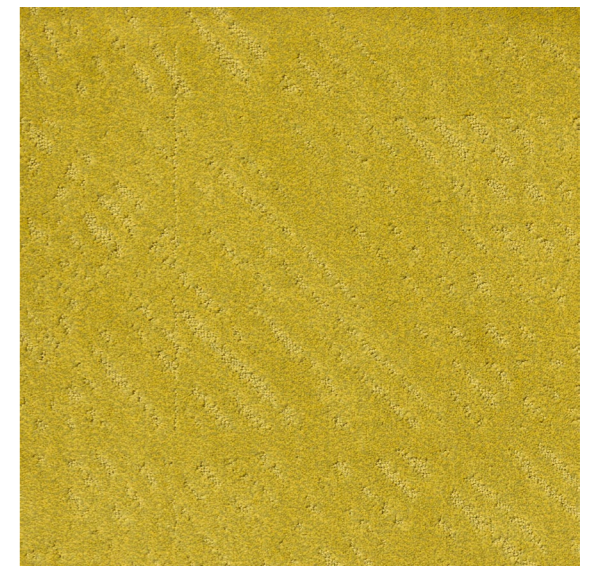
# Scales.

Pattern Repeat (l x w): ± 240 × 122 cm

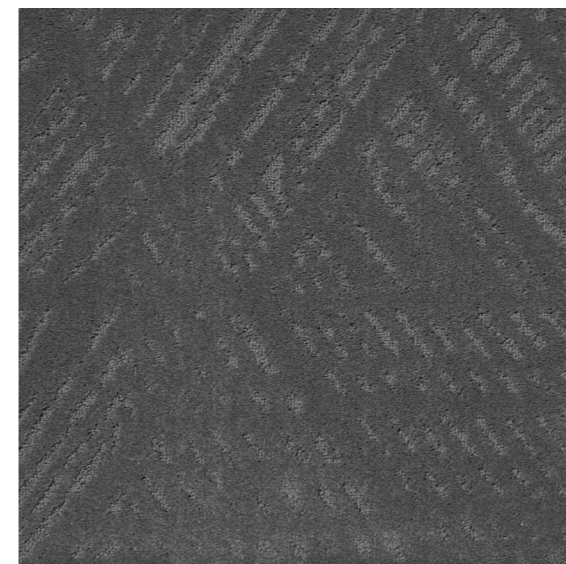
**Metal**



**Mustard**



**Silver**



Explore The Range.

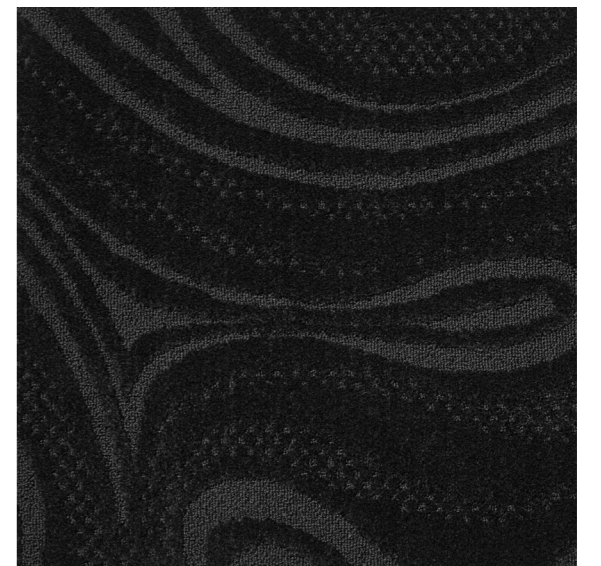
# Swirl.

Let go. Move. Have fun. Life is always in motion, so don't let current circumstances hold you back and don't let conventions restrict you from expanding yourself. Your unique creative energy is waiting to be released, so tap into it and let it swirl!

**Bronze**



**Charcoal**



**Dove**



**Earthy**





CLICK OR SCAN  
TO VIEW SPEC  
INFO

# Swirl.

Pattern Repeat (l x w): ± 194 × 132.5 cm

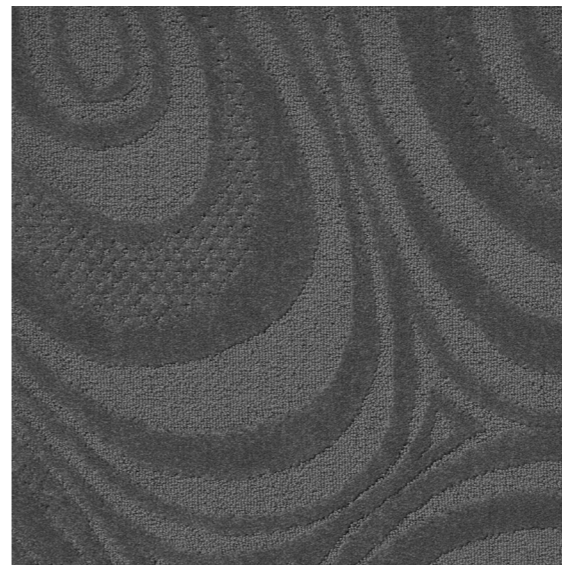
## Metal



## Mustard



## Silver



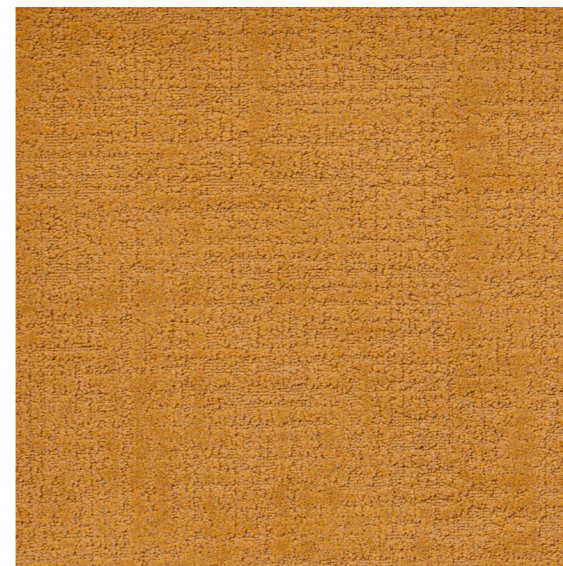
Explore The Range.

# Tulle.

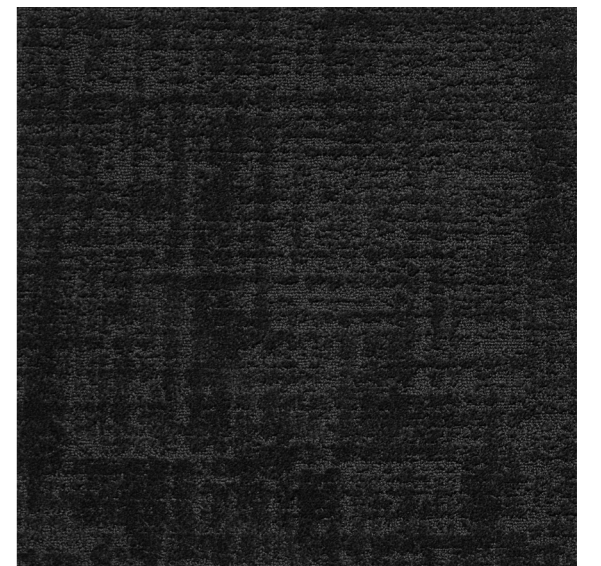
On its own a thread has little strength, but when woven with others new potential emerges. The transformation of a single thread into a new material with its own properties reminds us to seek people with whom we can work to unlock new and unexpected possibilities within ourselves, and others.



**Bronze**



**Charcoal**



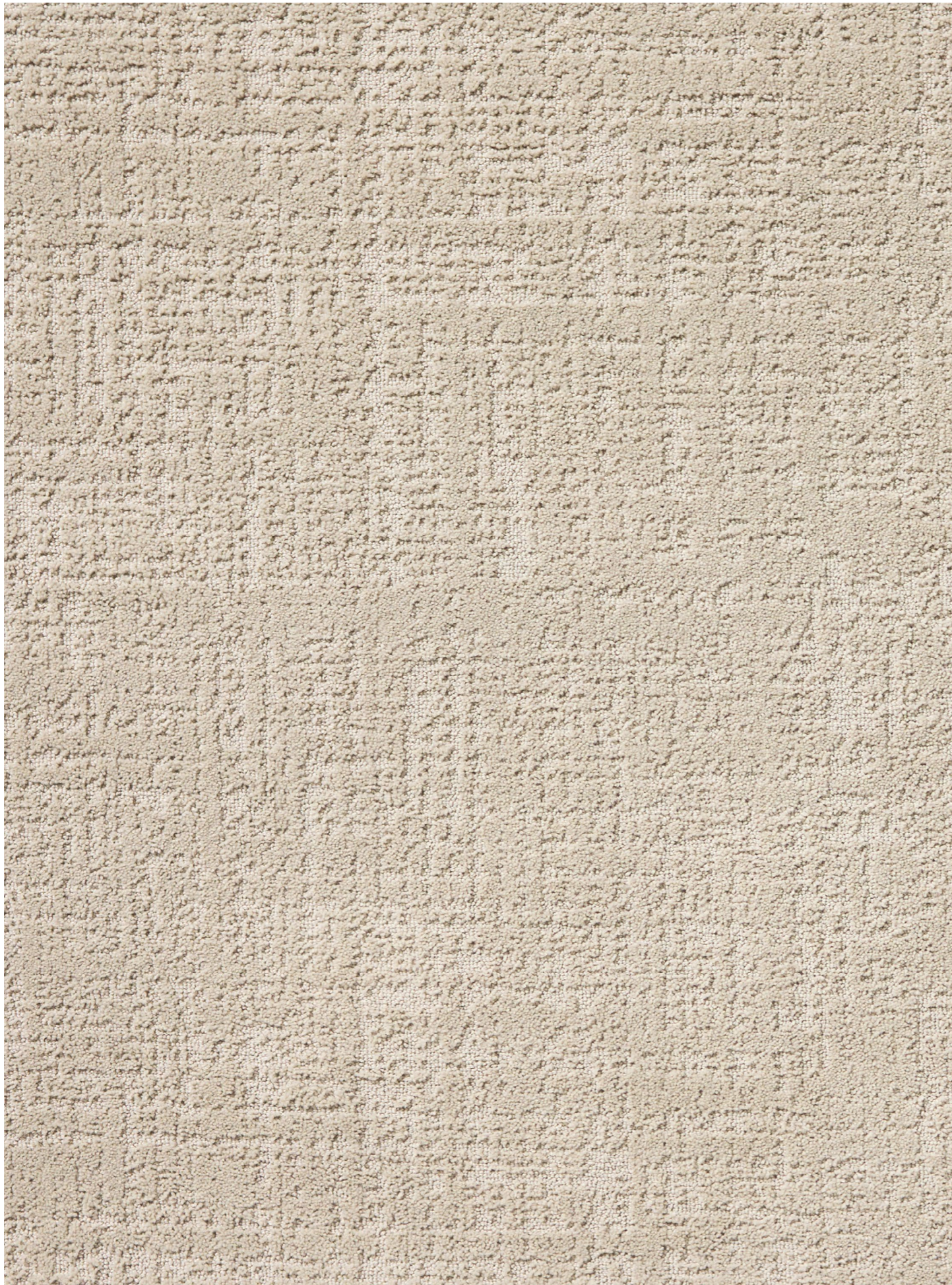
**Dove**



**Earthy**







CLICK OR SCAN  
TO VIEW SPEC  
INFO

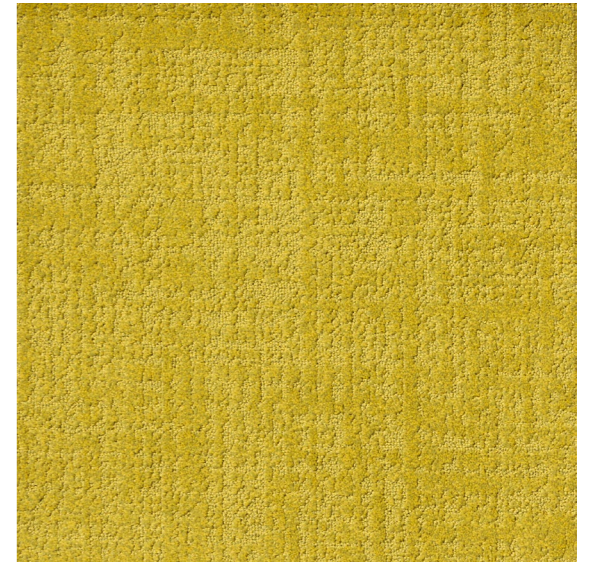
# Tulle.

Pattern Repeat (l x w): ± 68 × 67 cm

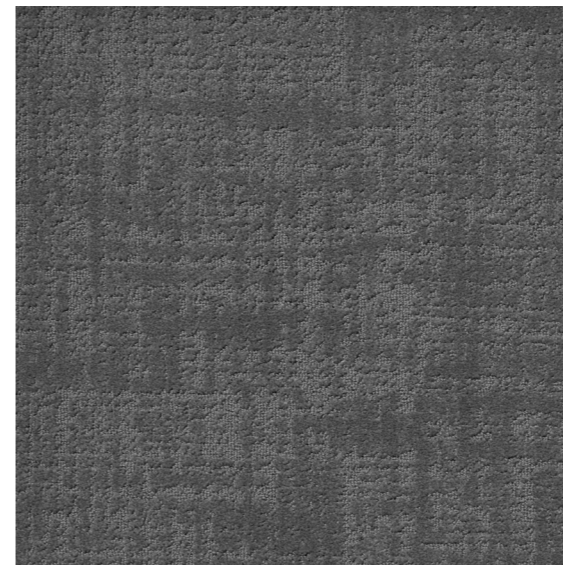
**Metal**



**Mustard**



**Silver**





Hospitality



Commercial



Medium/General Commercial



Underfloor Heating



Broadloom



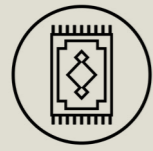
Eco-Friendly



Suitable for Staircases (Broadloom)



Office Chair Castor Wheels



Rugs



trust brands



(Broadloom)



(Broadloom)



(Rug)



(Rug)



From Local & Imported Goods

SABS ISO 9001 SABS ISO 14001 SABS ISO 45001



**Belgotex South Africa**

T: +27 (33) 897 7500

–

**Belgotex™**