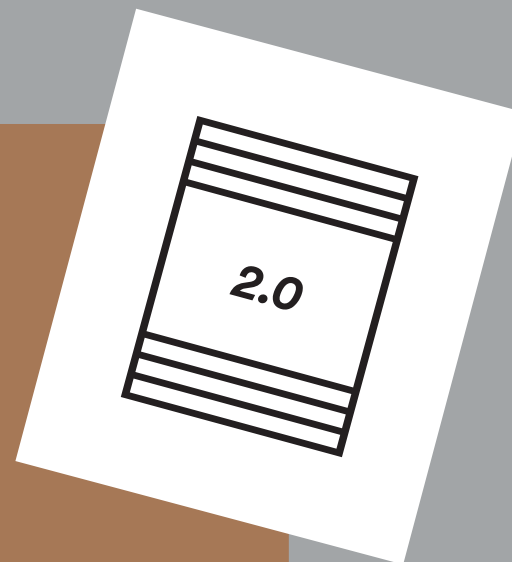


B.

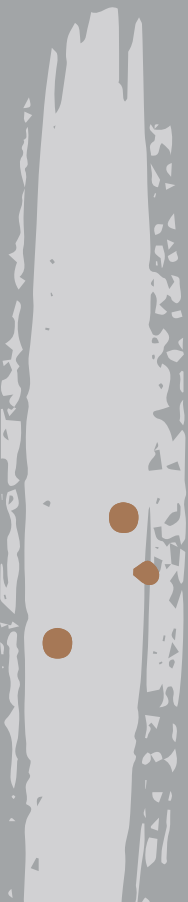


Untitled.

Product Catalogue: Custom Broadloom

Belgotex™

B.





<i>Untitled Concept</i>	<i>02</i>
<i>Extended Specification & Untitled Offering</i>	<i>04</i>
<i>Our Process</i>	<i>05</i>
<i>Design Concepts</i>	<i>06</i>
<i>Contact Us</i>	<i>09</i>

Untitled 2.0.

Belgotex in collaboration with MONN have innovated a unique product using Belgotex Solution Dyed Nylon for Extreme Condition (SDX) and MONN state of the art Axminster machine, a product with high quality and durability, designer playground when it comes to design capabilities.

Believe it: if you can conceive it, Untitled 2.0 will achieve it. Whether you'd like to start from scratch or prefer to re-style or recolour one of our existing designs, Belgotex has made it possible to turn your vision into reality.

With a catalogue that consists of over 150 designs, divided into several different categories with over 60 popular shades to choose from, you'll be able to create the perfect floor-scape for your unique décor scheme.



As Africa's leading flooring manufacturer, Belgotex designs, makes and distributes high-quality broadloom carpets. A new custom solution wants to make your dreams come true.

Because Belgotex is committed to making the custom process as enjoyable as possible, we offer complete design flexibility with electronic renderings for each concept and actual custom samples that can be physically placed in-situ to help others see your vision.



A vehicle for radical self-expression, Untitled offers unmatched choice and a personal point-of-view that speaks to the ideals and creativity of the individual, resulting in much more dynamic floorscapes.



Extended Specification

Use Classification:	Medium/General Commercial
Construction:	Woven
Product Description:	SDX Woven Carpet
Recycled Contents:	Yarn - Stainproof SDX Eco (certain colours)
Yarn Type:	Stainproof SDX (Solution Dyed Nylon)
Yarn Mass (above substrate):	±799g/m²
Pile Height:	±5.9mm
Total Thickness:	±8.0mm
Total Mass:	±1521g/m²
Widths:	3.66m & 4.00m
Machine Gauge:	Rows = 28 Pitch = 27.6
Fire Classification:	Dfl-S1 (EN 13501) Class 2 (ASTM E648) Class 3 (SANS10177-4)
Colour Fastness:	Light >6.0 (NF EN ISO 105 BO2) Rubbing 5.0 (ISO 105 X12) Water 5.0 (ISO 105 EO1)
Electrostatic Propensity:	-0.6 (kV) (ISO 6356)
Thermal Resistance:	0.1076 (m² k/W) (ISO 8302)
Sound Absorption:	(aw) 0.20 (H) (EN ISO 354)
Sound Insulation:	29 dB (EN ISO 10140-3)
VOC Tested:	Pass (ASTM D5116 CRI - GBCSA/ GBCA)
Castor Chair Suitability:	Intensive Use (NF EN 985 Method A)
Staircase Suitability:	Intensive Use (NF EN ISO 12951)
Warranty:	5 year manufacturing warranty
Guarantee:	5 year manufacturing guarantee

Use Classification:	Heavy Commercial
Construction:	Woven
Product Description:	SDX Woven Carpet
Recycled Contents:	Yarn - Stainproof SDX Eco (certain colours)
Yarn Type:	Stainproof SDX (Solution Dyed Nylon)
Yarn Mass (above substrate):	±1012g/m²
Pile Height:	±6.1mm
Total Thickness:	±8.4mm
Total Mass:	±1832g/m²
Widths:	3.66m & 4.00m
Machine Gauge:	Rows = 36 Pitch = 27.6
Fire Classification:	Cfl-S1 (EN13501) Class 1 (ASTM E 648) Class 2 (SANS10177-4)
Colour Fastness:	Light >6.0 (NF EN ISO 105 BO2) Rubbing 5.0 (ISO 105 X12) Water 5.0 (ISO 105 EO1)
Electrostatic Propensity:	-0.6 (kV) (ISO 6356)
Thermal Resistance:	0.1076 (m² k/W) (ISO 8302)
Sound Absorption:	(aw) 0.20 (H) (EN ISO 354)
Sound Insulation:	29 dB (EN ISO 10140-3)
VOC Tested:	Pass (ASTM D5116 CRI - GBCSA/ GBCA)
Castor Chair Suitability:	Intensive Use (NF EN 985 Method A)
Staircase Suitability:	Intensive Use (NF EN ISO 12951)
Warranty:	5 year manufacturing warranty
Guarantee:	5 year manufacturing guarantee

Untitled 2.0 Offering

Minimum per colour:	100m ² (Total of 300m ² per creel)
Minimum Colour Offering:	2 colours
Maximum Colour Offering per design:	14 colours
Colour Selection:	Untitled 2.0 Tuft Box (400 colours)
Widths:	3.66m & 4.00m
Project (Digital):	3 to 5 days
Project (Physical Sample):	3 to 5 days from requesting
Mock-up Material Offering:	20sq per colour (applies to projects of +1000sq, charged to project pricing)

Our Process.

The sales rep and specifications business developer must complete an electronic custom request for factory approval, after which they'll be notified whether their request meets the requirement and if not, why it has been declined.

Once approved, a designer will be assigned to the project who'll correspond with the rep via the electronic custom request data base, where all correspondence is logged and changes are recorded.

The designer's digital design will be sent to the sales rep for pre-approval, and when the customer is satisfied with the colour and design a final digital sent for sign-off.

On sign-off a physical sample is made on the Kibby sample, which is purely for colour and design, not specification. Specification samples are found in the Untitled Custom Broadloom box. A physical sample of your design will be labelled as per the digital, and these will be packaged in custom boxes for customer approval.

Once received and customer wants to place the order, the following documents below will be required by the factory to proceed with production. Note if any of the below documents are not completed with the correct information or incomplete, order will be pending until all documents are correctly forwarded to the factory.

Order – Must state Project No, Pattern Ref, Colour Ref, Product Width, Finished Backing, Quantity

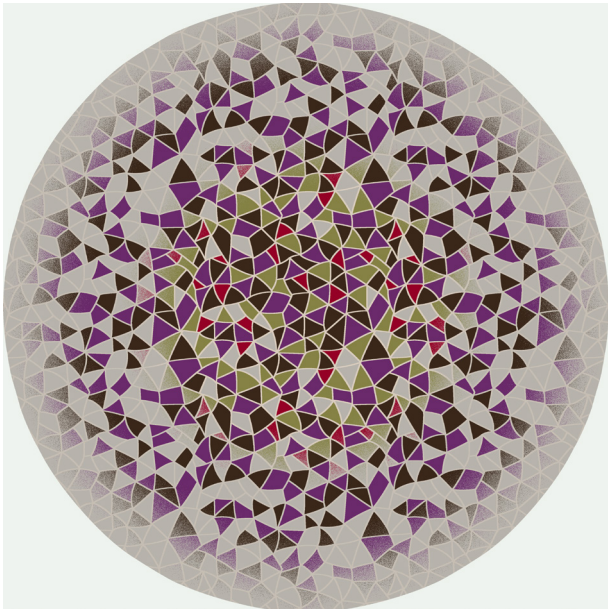
Digital sign-off – Signed and Dated by customer, scanned in colour and e-mailed or attached to electronic custom request

Physical sample sign-off – Signed and Dated by customer, scanned in colour and e-mailed or attached to electronic custom request

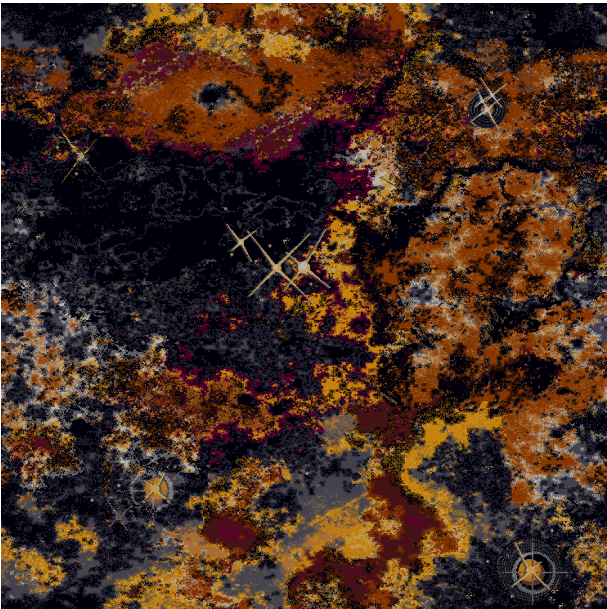
Acknowledgement of condition form – Must be completed with order and forwarded

Mock Room Policy* (if required)

Design Concepts.



- E21
- G35
- A04
- I38
- H05
- C35
- C09



- A21
- D05
- I21
- A08
- B07
- A03
- C35
- C27
- J05



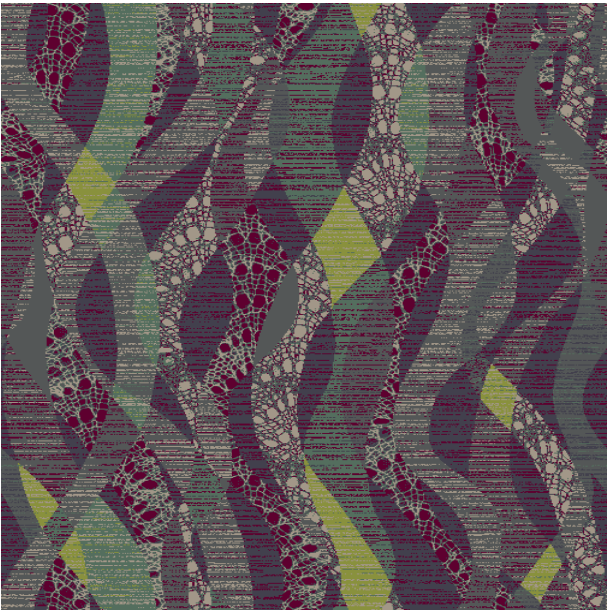
- J05
- A08
- B07
- C35
- C09
- J31
- F14



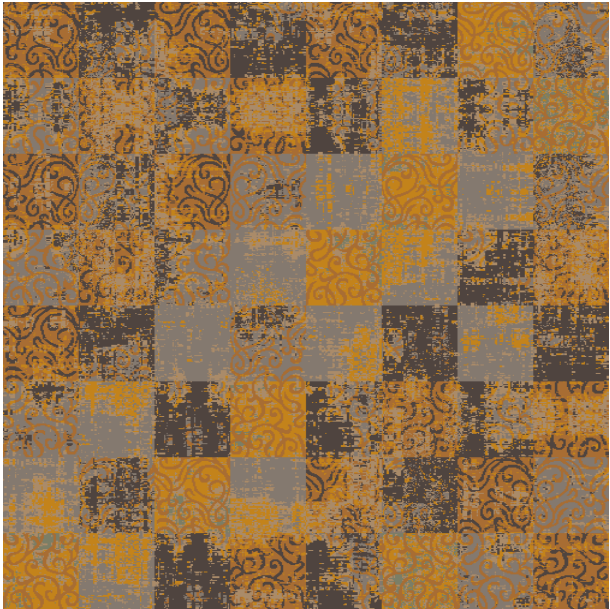
- A21
- D05
- B24
- J31
- E21
- A08
- B07



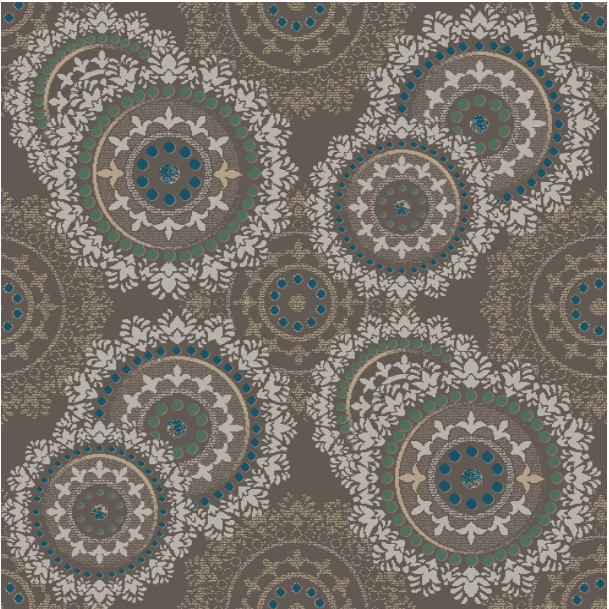
- A21
- B07
- A10
- H05
- J05
- A08
- J07
- D05



- J05
- A09
- H17
- J32
- I21
- A16



- B24
- A08
- G33
- J31
- B07
- G28

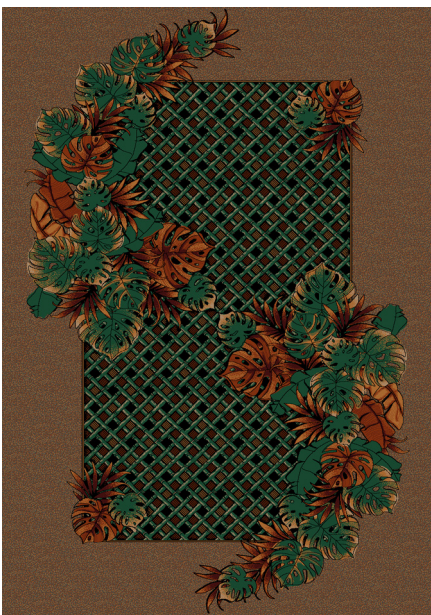


- F14
- J32
- G33
- G35
- B26
- A16

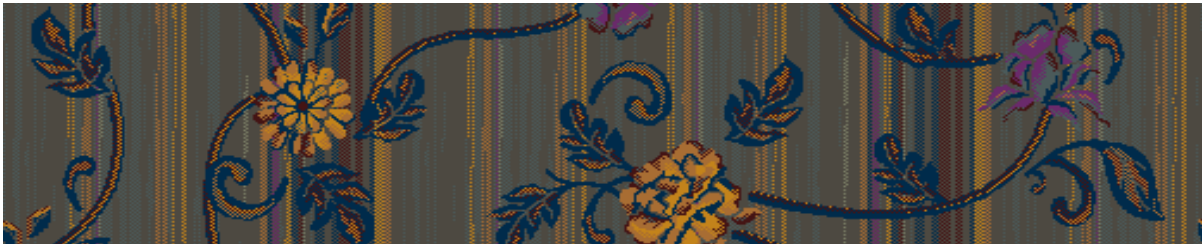
Design Concepts.



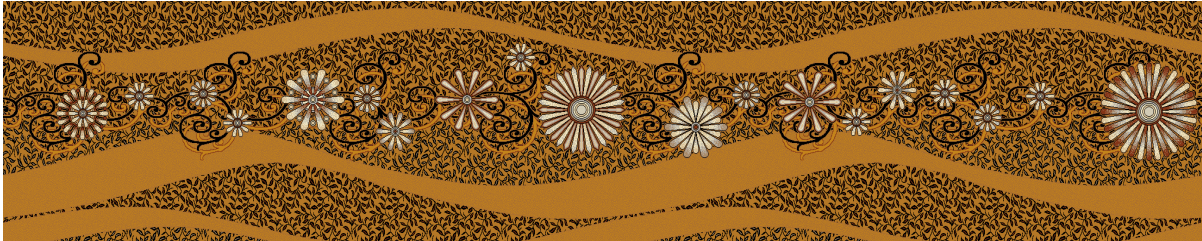
- A21
- E21
- B24
- G33
- H05
- B07
- A08
- J31



- A21
- D05
- A10
- F31
- D26
- B07
- A03

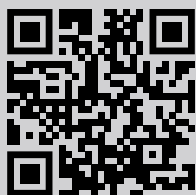


- J14
- A03
- B24
- A08
- E15
- A04
- G28
- B07



- A21
- B07
- D05
- F38
- A08
- F31
- J31
- C35





Scan here,
for more design options and
your guide to carpet care.

And if this doesn't cover it, please contact one of
our sales representatives who are here to help.

Belgotex South Africa
E: info@belgotex.co.za

Belgotex Africa
E: africa@belgotex.co.za

Belgotex Middle East
E: middleeast@belgotex.co.za

Belgotex India
E: india@belgotex.co.za

Belgotex Australia
E: australia@belgotex.co.za

Belgotex New Zealand
E: newzealand@belgotex.co.za

—
belgotex.co.za

Untitled.

belgotex.co.za

20 Chesterfield Road, Willowton,
Pietermaritzburg, 3201, South Africa